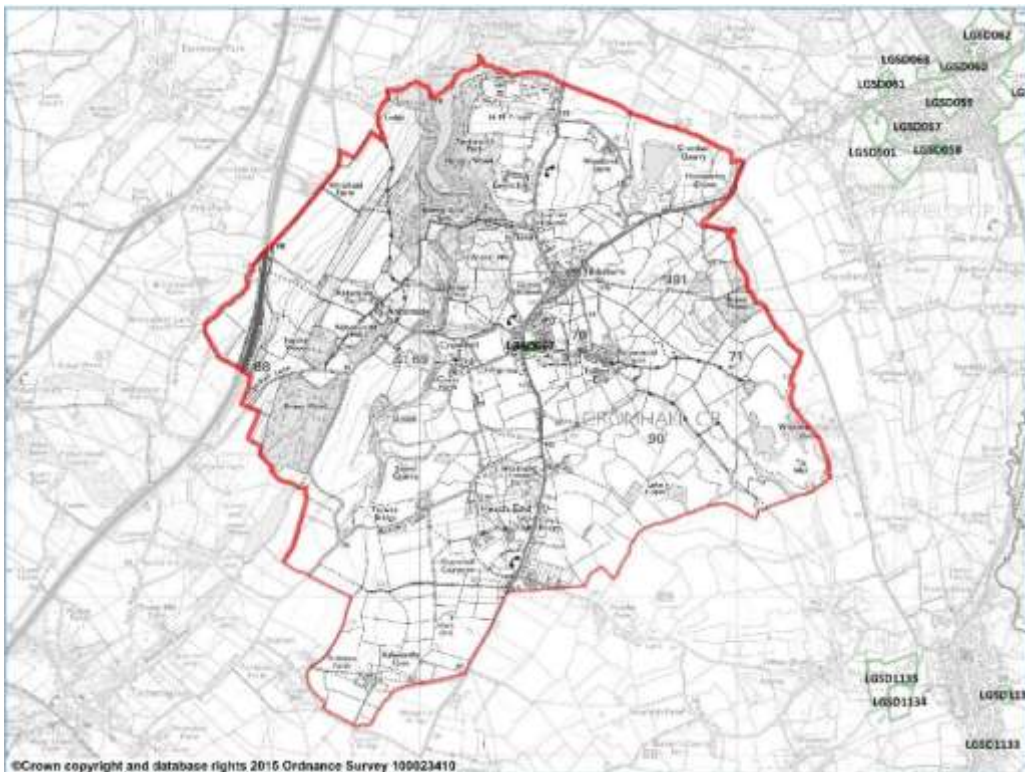


# CROMHALL PARISH PLAN SURVEY 2016

SURVEY UNDERTAKEN 2014



## INTRODUCTION



Parish plans arose from the Government's Rural White Paper 'Our Countryside: The future' (2000) which gave local people the opportunity to become more involved in the development of their communities and improve the local quality of life. This draft parish plan has been prepared by the Cromhall Parish Council and reflects the wishes and views of parishioners on how they would like the village to develop into the future based on consultations and a limited survey undertaken in 2014. At the time of the survey local businesses were not invited to comment on the future of the parish.

After initial consultation with the parish, the parish plan questionnaire was delivered to every single household in the village, encouraging residents to complete and state their views about the future of the village. A 33% return rate was achieved (87 questionnaires returned) and data was analysed by Gloucester Rural Communities Council with initial findings published in the 5 Alive newsletter just before Christmas 2014. Following in depth analysis of the data, which took far longer than anticipated, the results are contained in this parish plan. The influences that have led to the shape of the current village are reviewed along with the aspirations from the village survey.

The Parish Council would like to thank the following bodies / parties / individuals for their help in producing this plan:

- South Gloucestershire Council (grant monies)
- West of England Rural Network - Dick Whittington
- Gloucester Rural Community Council – Questionnaire / Analysis
- Community Shop – being a focal collection point for returned questionnaires
- Local Residents
- All Councillors (past & present)
- Parish Clerk
- Members of Charfield Village Plan (Sue Simmons and Nicola Melville)

## History of Cromhall

The ancient landscape of Cromhall parish is revealed at Slickstones Quarry, an SSSI which is an outstanding site for reptilian faunas, Cromhall even has a carnivorous dinosaur named after it, *Agnosphitys cromhallensis*. Farming settlements have been found in the area dating from the Roman period and it has a long history of a religious presence with the story of the seventh century Cromhall hermit. More recently its industrial past centred on lime and coal with numerous tumps or spoil tips dotted around the parish. Quarrying and agriculture remain to this day.

An Anglo Saxon settlement, the village got its name from two old English words, 'crumbe' meaning bent or crooked and 'halh' meaning a nook or corner of land where the early village was in a corner of land surrounded by Cromhall stream. Centred around the two manors, Cromhall Abbots (Abbotside), granted by Robert, Lord Berkeley to the Abbey of St Augustine's in Bristol about the year 1150 and Cromhall Lygons owned by the Lygon family who purchased the manor from the Crown in the reign of Henry V eventually passing to the Ducie family in the 1700's.

The original village no longer exists, probably as a result of changing farming practices over many years, leaving just four scattered hamlets and a church that appears isolated. The current village has spread out away from the church and predominately follows the line of the now B4040 for just over a mile and is one of the longest villages in the country.



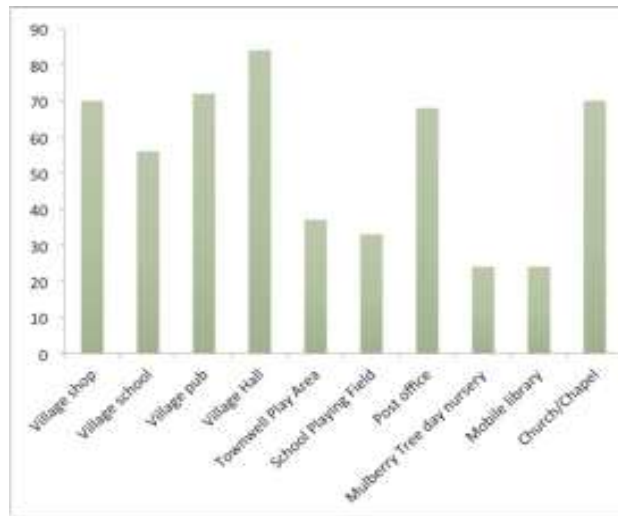
Located in the north of South Gloucestershire, it is a predominantly rural landscape close to the Cotswold ANOB. Cromhall is a small parish which the 2011 census showed consisted of 287 dwellings of which 8 were unoccupied. 729 people were recorded as living in 279 households. The overall stated population for Cromhall on the census is higher as it included residents at Leyhill Open Prison.

Today Cromhall itself is made of a series of parts with distinct names, detailed particulars are available on the Cromhall community website. Bibstone which may have originated from a combination of a person's name and 'tun' or farmstead; Townwell; Longcross, where the Bristol, Talbots End and Church Lane roads meet; Talbots End, which contains some of the oldest buildings in Cromhall and Heathend, where The Green (now a designated village green), may have been an early meeting place for traveling traders and which developed from the eighteenth century onwards as the population increased and roads improved. The parish also includes Leyhill and many small hamlets, outlying homes and farms.

## A. COMMUNITY FACILITIES

Cromhall parish has a range of community facilities, the questionnaire listed the village hall, school playing fields, Townwell play area, The Green, Millennium stone, Post office, village shop, pub (closed at time of survey), Leyhill social club (closed at time of survey), school, Mulberry Tree Kindergarten, mobile library, chapel and church.

The village survey showed that residents value these and scored many community facilities as important or very important.



Facilities thought important/very important (% respondents)

### Village shop and Post Office



Set up as a Village Shop Association and with the help of many volunteers, the village shop/post office is deemed 'very important' to 70% of respondents.

70% of respondents stated they frequently used the shop.

68% of respondents stated they frequently used the Post Office.

Another highly valued amenity is the village hall which is important or very important to 84% of respondents.

Cromhall has a well-equipped village hall run by the Cromhall Parish Hall and Recreation Trust which is available for hire.

43% of respondents stated they used the hall occasionally.

### Village Hall



The hall is regularly used by The Mulberry Tree kindergarten, yoga classes, T@3, Whist Drive and Parish Council meetings. The questionnaire suggested the following additional improvements to the Village hall but resulted in no clear majority response:

- Coffee shop:  
33% of respondents thought a coffee shop fairly important and 34% not very important.
- Community internet access:  
34% felt not very important.
- Modernisation:  
Whilst 39% stated this was fairly important, 37% stated not very important.
- Improved security:  
37% of respondents felt this fairly important, 37% felt not very important

### St Andrews School



St Andrews is a small and friendly village primary school which also provides out of school clubs. Overall the community felt the School is going from strength to strength and wanted to ensure this continued with children involved with the community.

Whilst the survey results do not indicate whether these following respondents have children, the school is rated as very important to 56% of respondents.

### School Playing fields

Sporting facilities were valued by respondents with 41% stating the playing fields are very important.

This facility is also central to many village functions including fetes and flower show.

33% of respondents stated they occasionally used the playing fields.



When asked to select which areas of open space in Cromhall could be improved, the playing fields scored the highest response rate with 16% stating it needed improvement.

## Townwell Play area



Play facilities at Townwell were deemed as very important to 37% of respondents.

When asked 14% of respondents felt the play area could be improved

- The Green and Millennium Stone areas were deemed not very important to 31% and 36% of households respectively. 14% of respondents felt The Green could be improved.
- 44% of respondents stated they would like to see more seating throughout the village.
- 14% of respondents felt Hawkers Knapp could benefit from improvement

## Royal Oak

It should be noted that the pub was closed at the time of the questionnaire. Since the survey this facility has now re-opened.

- This was viewed as an important asset with 72% of respondents saying it was important or very important.
- A further 70% of respondents stated a family garden area at the pub was important or very important.



## Cromhall Chapel and St Andrews Church

The church and chapel were rated as very important or important to 70% of respondents with 30% of respondents stating they used these facilities. The survey and response analysis do not make clear whether these were members of the congregations or thought these facilities important due to other reasons eg village focal point or historical architecture. Cromhall does have a long religious presence dating back to at least the 7<sup>th</sup> century if stories of the Cromhall hermit are correct. Both buildings are of historic interest, Cromhall Chapel is associated with the Reverend Roland Hill and was founded in 1813 whilst the current St Andrews church was constructed in the late 13<sup>th</sup> or early 14<sup>th</sup> century on, it is believed, the site of an earlier church.



### Other facilities

Respondents were asked what additional facilities they might like to see in Cromhall.

- More shops and/or a takeaway was met with negative responses with 38% stating these were unwanted and 40% not important.
- There was no clear majority for a Community garden although 34% stated it was fairly important. A further 46% stated that allotments/garden share scheme was fairly important.
- Nearly a quarter of respondents (24%) thought the mobile library important, again the questionnaire/analysis failed to indicate whether these respondents were users of the service.

### B. COMMUNITY ACTIVITIES

Respondents were asked about what community activities they either participated in at Cromhall or locally and what activities they would like to see in Cromhall. Response rates were low and showed:

In Cromhall

- Horticultural club (and flower show) 36%
- Book club 13%
- Cubs/scouts 11%
- Senior citizens 11%

Locally:

- Keep fit/dancing 26%
- Other 15%
- Rugby and football 10% each

Additional suggestions for activities received limited responses although 26% would like to see more community activities. There was no overwhelming support for any of the suggestions:

Activity	% respondents not interested	Number of households with some interest
Sports club	41%	36
Social activities for older people	48%	33
Music club/bands playing	47%	31
Dance groups	59%	22
Singing club/choir	51%	28
Other toddler activities	61%	17

Youth groups	54%	23
Interest groups (hobbies)	37%	37
Cromhall in Bloom	-	39
Twinning	62%	17
Community orchard/garden	43%	36

Households were asked how adequate activities in Cromhall were for varying age groups.

- Activities for Baby & Toddlers, Pre-schoolers, Infant School Children were deemed to be adequate.
- Activities for Junior School Children, 11 – 14 year olds and 15 – 18 year olds were deemed to be inadequate.
- There was no clear majority with regards to people of working age as to whether facilities were adequate or not.
- Activities for retired people (65 years +) were deemed to be adequate.

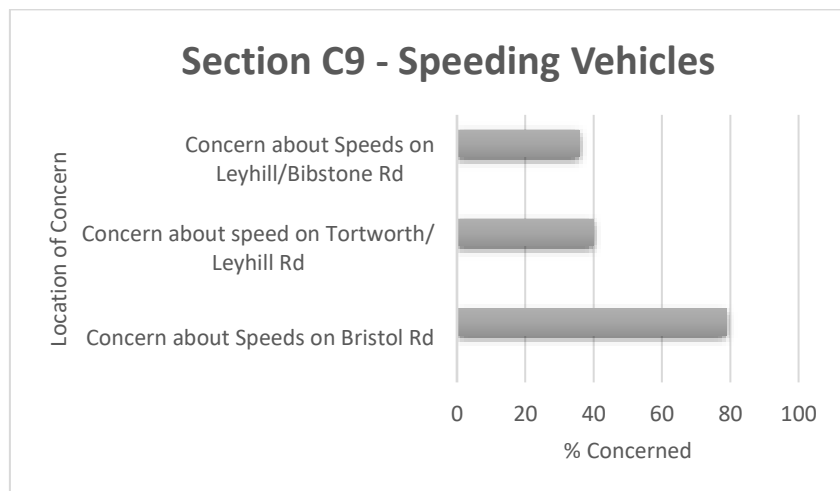
When asked about reading habits of 5Alive, 89% of respondents stated they always read the paper copy, online access was inconclusive. 56% of respondents occasionally access Cromhall website.

### C. SAFETY AND SECURITY

The overwhelming concern to respondents was speeding traffic through the parish.

The highest priority was

- Combatting speeding traffic followed by
- reducing HGV traffic,
- safer road and pavements for pedestrians.
- installing a zebra crossing.



64% of respondents believed traffic calming measures would be appropriate. 48% expressed concerns about safety in the Longcross area.





When asked about crime

- 67% of respondent had not experienced anti-social behaviour in the last three years and of the 28 households that had, 51% did not report it to the Police.
- 72% of respondents had not had any other reasons to call the Police in the last three years and of those who had, 51% felt the speed of the Police response appropriate.



45% of respondents would be interested in joining a Neighbourhood Watch scheme.

Overall residents wanted to prioritise a low crime rate and maintain a safe environment for all.

## **D TRANSPORT & INFRASTRUCTURE**

Cromhall parish has limited public transport. Many parishioners are dependent on their own transport for work and leisure.

Households were asked about their use of and views on alternative methods of transport. Clearly Public transport is not used regularly. The survey results suggested very few people cycle to work or school although 38% occasionally cycle for recreation. However, 59% of households would cycle if there were safer cycle routes.

Although 68% of households stated the layby near J14 of M5 should be made into a more formal car share facility, 70% of households would not pay for secure parking at this location.

There was no interest in car share or community led transport options.

Questions on energy and fuel showed:

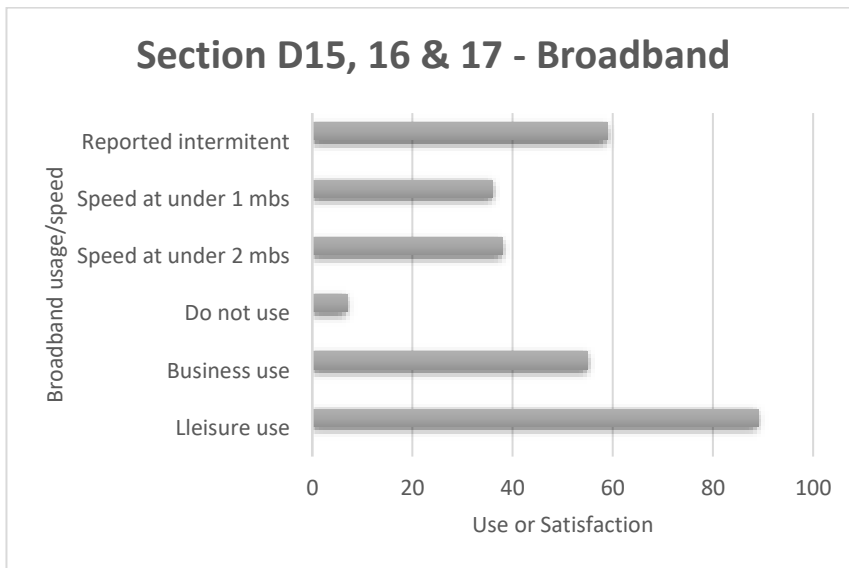
- 89% of households are concerned about rising cost of fuel.
- 59% of households would support renewable energy installations if it reduced cost of energy to local community.
- 52% of households were interested in a buying group for oil.



**Broadband**

The survey showed:

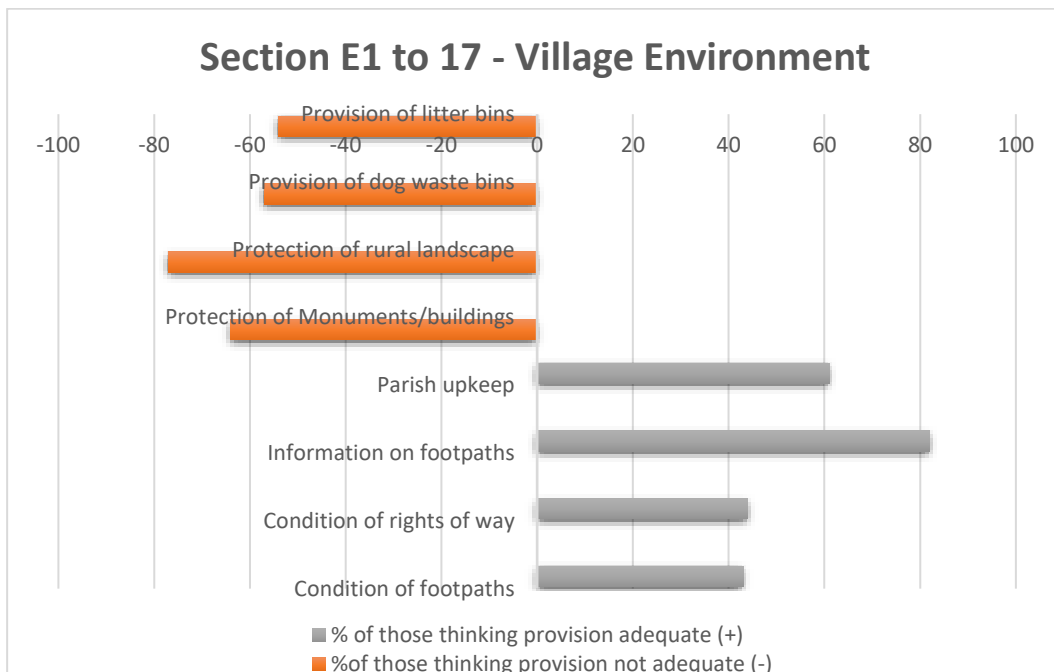
- 89% of households use Broadband for leisure purposes and 55% use for business purposes
- Speed of broadband was slow, very slow or intermittent.



Since the survey, super-fast broadband has become available to some parts of the parish. Coverage is far from universal and slow internet speeds remain an issue and impacts on the ability to work from home. The 2011 census showed over 7% of Cromhall's working population worked from home.

## E. ENVIRONMENT

Overall the survey showed respondents care about their village environment and value and use local footpaths. Overall residents wanted to keep the village clean and attractive for everyone to enjoy and appreciate.



The chart shows that whilst the majority are happy with the Parish upkeep there are areas of discontent regarding bins and the protection of both the rural and historic environments.

82% of respondents stated they would use a leaflet/map of footpaths around the village.



In keeping the village tidy and litter free:

- 75% were aware of the annual litter pick
- 54% participating or willing to participate.

77% stated concern about the protection of the rural landscape.

Maintaining and enhancing existing open spaces was viewed as important.

There were concerns not just about the natural environment but also the built environment in particular the historic buildings / listed and locally listed buildings.



## F. HOUSING



Key themes were

- Limit further housing
- Build affordable housing for local people
- Have houses for older people to downsize to
- Better infrastructure
- Good design quality
- Maintain settlement boundary

Households were asked to comment on what type of growth they would like to see in Cromhall over next 10 years (this could be residential or business / retail).

- 62% of households stated they would like to see growth capable of sustaining current facilities
- 70% of households stated they would not like to see growth requiring additional facilities

- 56% of households stated no need for business units and 64% stated no need for retail units
- Aesthetic design of new housing is very important to 75% of households
- Energy efficiency is very important to 61% of households

Development suggestions included:

- Consideration for more housing to the South of the village towards Heathend, instead of it all being concentrated at Bibstone/Townwell.
- There was a need to create a centre to the village to help bring people together and allow for better community engagement but debate remained as to whether the centre should be Bibstone/Townwell or further south.



The location of the school was thought to be suitable but it would need to be extended in the future.

There were concerns around sewerage capacity especially if there was further housing development.

The overwhelming feeling of residents was that Cromhall should retain its village feel and maintain its community spirit. The Parish Council was valued as an important vehicle for people to have their say and air their concerns.



This village survey carried out in 2014 is viewed as a precursor to, and the basis of, a Neighbourhood Plan

### Cromhall Parish Action Plan September 2015

<b>No.</b>	<b>Village Character</b>	<b>Action</b>	<b>Lead responsibility</b>
1.1	Retain Village Feel	Maintain careful watch over scale and nature of any development	PC
1.2	Maintain Community Spirit	Encourage involvement in current or new activities (see 7)	
1.3	Sustain Parish Council	Encourage greater interest & participation through newsletter and website	PC
1.4	Crime and Safety	Prioritise low crime rate & safe environment. Work with South Gloucestershire Community Engagement Forum	PC/SGCEF
<b>No.</b>	<b>Village Facilities</b>	<b>Action</b>	<b>Lead responsibility</b>
2.1	Village Pub	Encourage support where appropriate, however this is an independent business	All Locals/Groups
2.2	Village School	Support and encourage children's involvement in community	All
2.3	Village Shop & Post Office	Encourage Voluntary Committee to promote and involve with the community	Shop Committee
2.4	Church and Chapel	PCC and Chapel need to keep in touch with parishioners	Church / Diocese
2.5	Village Hall	Committee needs to work with users and promote the hall in a professional manner	Hall committee
2.6	Keeping Young People in the Community	Housing Needs Survey / affordable housing	PC / SGC
<b>No.</b>	<b>Housing &amp; Development</b>	<b>Action</b>	<b>Lead responsibility</b>
3.1	Influence further housing	Via PSP DPD or a NP	PC
3.2	Affordable Housing for local people	Housing Needs Survey	PC / SGC
3.2	Downsizing for older people	Housing Needs Survey	PC / SGC
3.4	Sustaining facilities	Encouraging use of local facilities and involvement in community life	PC / All Groups
3.5	Better Infrastructure	Via a NP	PC
3.6	Design Quality	Via NP	PC
3.7	Settlement Boundary	Via PSP DPD or a NP	PC
3.8	Renewable Energy	Discuss with estate / energy companies / landowners	PC / SGC
<b>No.</b>	<b>Road Safety</b>	<b>Action</b>	<b>Lead responsibility</b>
4.1	Speeding traffic	Pursue rationalisation of speed limits with SGC	SGC

4.2	Reduce HGV traffic	Work with SGC and others	SGC
4.3	Pedestrian safety, footpaths	Scope possibility of key footpaths. Work with Highways/SGC	PC/SGC
4.4	Zebra crossing(s)	Work with SGC	SGC
4.5	Traffic calming	Scope proposal to install village gates etc	PC
4.6	Speed cameras	Encourage and promote Community Speedwatch	PC/SGC
<b>No.</b>	<b>Broadband</b>	<b>Action</b>	<b>Lead responsibility</b>
5.1	Poor speeds for those with no access to super-fast broadband	Survey Residents' Broadband Speeds Continue to lobby SGC and others for universal coverage in parish	PC
<b>No.</b>	<b>Environment</b>	<b>Action</b>	<b>Lead responsibility</b>
6.1	Open Spaces	Protect and enhance them as much as possible, encourage formation of friends group	PC
6.2	Agriculture	Work with Estate and Local Land Owners	PC
6.3	More Tree Planting	To enhance character and replace older stock	PC or FG
6.4	Keep Village attractive & tidy	Encourage an 'In Bloom' type group – via Horticultural Society	PC/HS
6.5	Litter (cars)	Encourage community involvement and annual litter pick	PC/HS
6.6	Public Rights of Way	Footpath Wardens and SG Officers	PC and SGC
6.7	Allotments	PC to investigate if more than 6 enquiries in one year	PC
6.8	Cycling – links to nearby villages	Parish Council with Sport England / Cycle Groups and SGC	PC/SGC/groups
6.9	Sewage	Parish Council to keep on top of issues by logging with SGC and Wessex Water	PC / SGC
<b>No.</b>	<b>Community Activities</b>	<b>Action</b>	<b>Lead responsibility</b>
7.1	More community activities	This needs individuals to drive forward	All
7.2	Exercise classes	Encourage individuals to look at using Hall / Chapel for this	All
7.3	Help for OAP's	Individual Groups / Amanda Pearson Memory Group / Luncheon club, etc.	AM / MS
7.4	Facilities for Children & Young People	Support toddler group and somewhere for indoors and outdoors play	PC/Hall Committee
7.5	Outdoor (all weather) sports facilities	Unlikely unless major development in Cromhall	
<b>No.</b>	<b>Other Issues</b>	<b>Action</b>	<b>Lead responsibility</b>
8.1	Transport Links	Identify & Promote Community Transport services where appropriate	PC/ other villages
8.2	Gas supply	Promote community fuel scheme where no gas supply where appropriate	PC / CEMEX